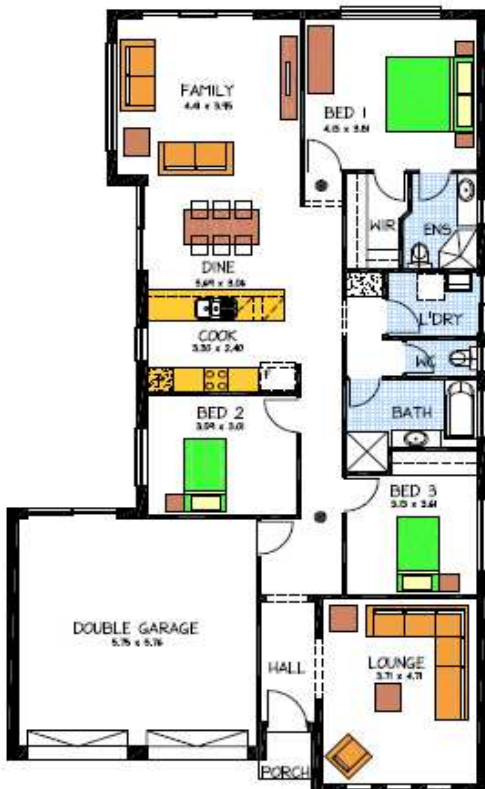




Home & Land Packages



THE KYTON

LOT 58 'MAWSON GREEN' MEADOWS

This package includes:

- 860m² of land in the lovely country setting of Meadows
- Rossdale Homes Kyton plan built to Sovereign Specifications
- One of our most popular courtyard homes with 3 bedrooms and 2 living areas
- Master bedroom with ensuite and walk in robe
- Built in robe to bedroom 3
- Front elevation is rendered and painted with feature bookleaf stack stone to brick pier
- Double garage with automatic Panel Lift doors and internal access
- Quality Westinghouse appliances to kitchen including retracts range-hood set in overhead cupboards
- Instantaneous hot water system for endless hot water
- All service connections are allowed for including gas bottle ready
- Healthy footings allowance including all soil removal from site
- Bushfire requirements have been allowed for
- 25 Year Structural Warranty
- 100% Absolute Fixed Price Contract with no hidden costs

Disclaimer: All care has been taken in the preparation of this material. No responsibility is taken for any errors or omissions. Details are subject to change without notification. Images for illustration purposes only. E&EO.

PACKAGE FROM: **\$369,000**

FOR THIS OFFER CALL
BRAD: 0421 940 398

P: 08 8433 2000 www.rossdalehomes.com.au

Land sold by
Devine Communities
Ben Tonna 0415 638 341
RLA 190749

Because trust is a must.
**ROSSDALE
HOMES**